

01 Getting started with Dreamweaver

Where to start

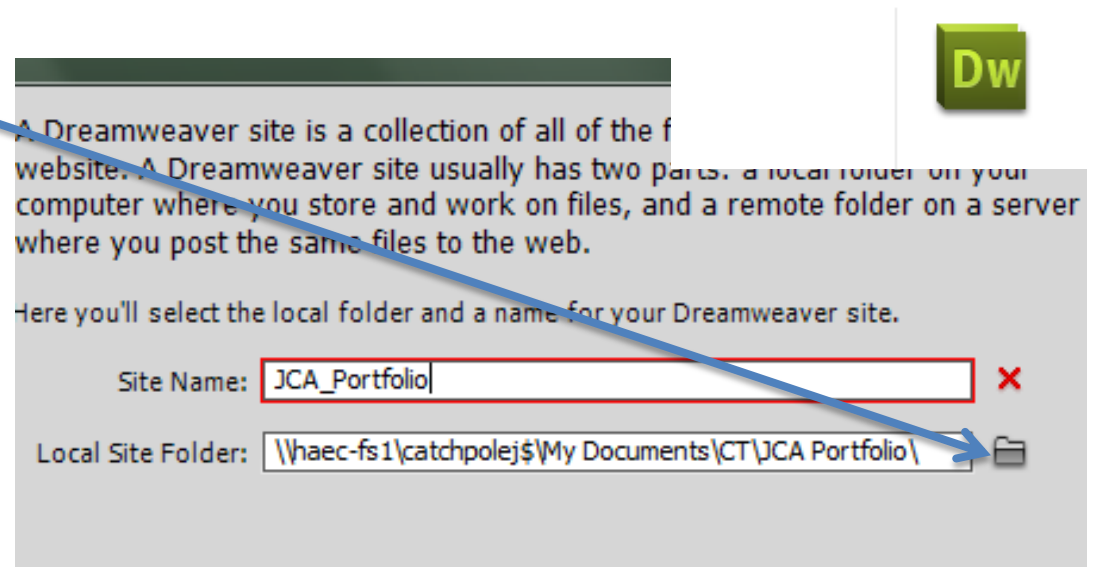
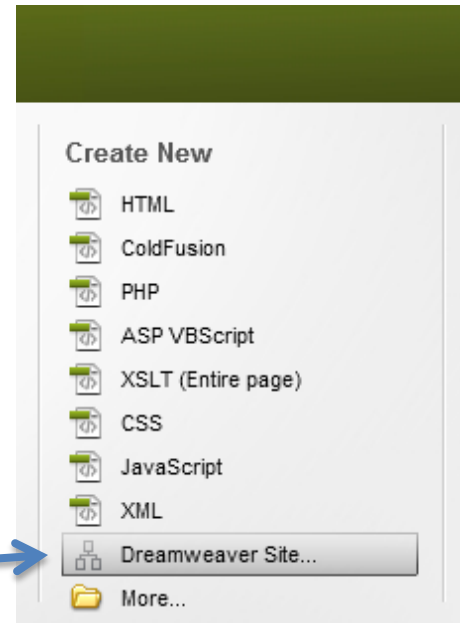
- Define a site

- Create a home document

The workspace

Where to start (A)? Define a site

1. Make a folder in your documents where the webpages you want to create will go.
2. Open Adobe Dreamweaver CS5: Select: Start\All programs\Adobe Design Premium CS5
3. Select Create New\Dreamweaver Site
4. Browse to set Local Site Folder to the folder you have created. Name your site
5. Save the site



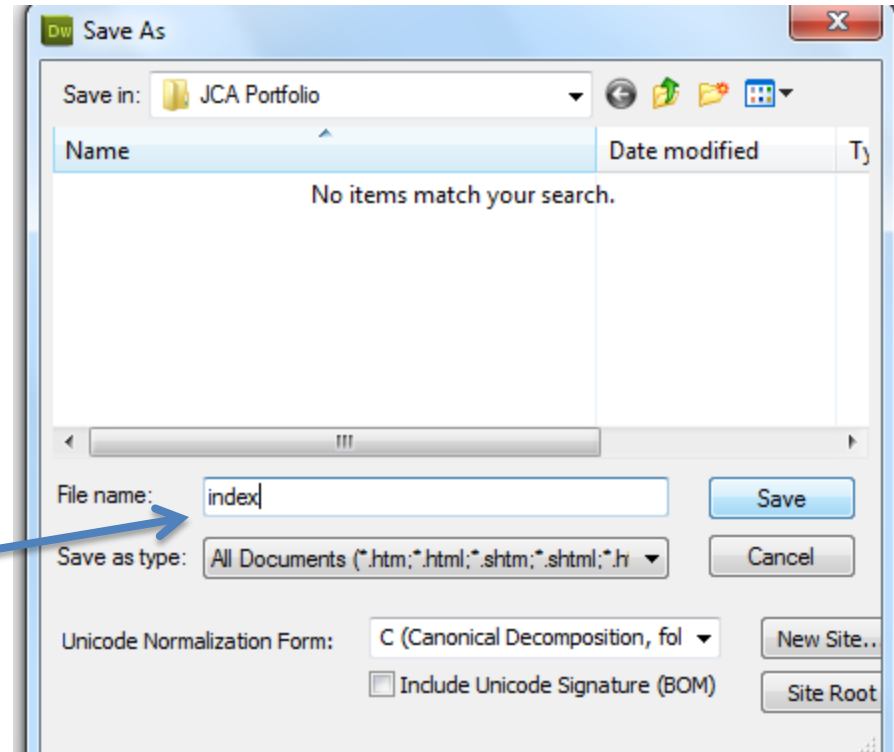
Where to start (B)?

Create a home page

5. Create a new HTML file and in the design window type a home page heading. Select the heading: right click: paragraph format\heading1.

6. Select: File\Save as\Browse for your folder, use the file name “index” or “home”.

Save



Design window

The screenshot shows the Adobe Dreamweaver Designer interface. The main workspace is in Design view, displaying a blank page with a vertical cursor. The left sidebar contains the Code view, which shows the following HTML code:

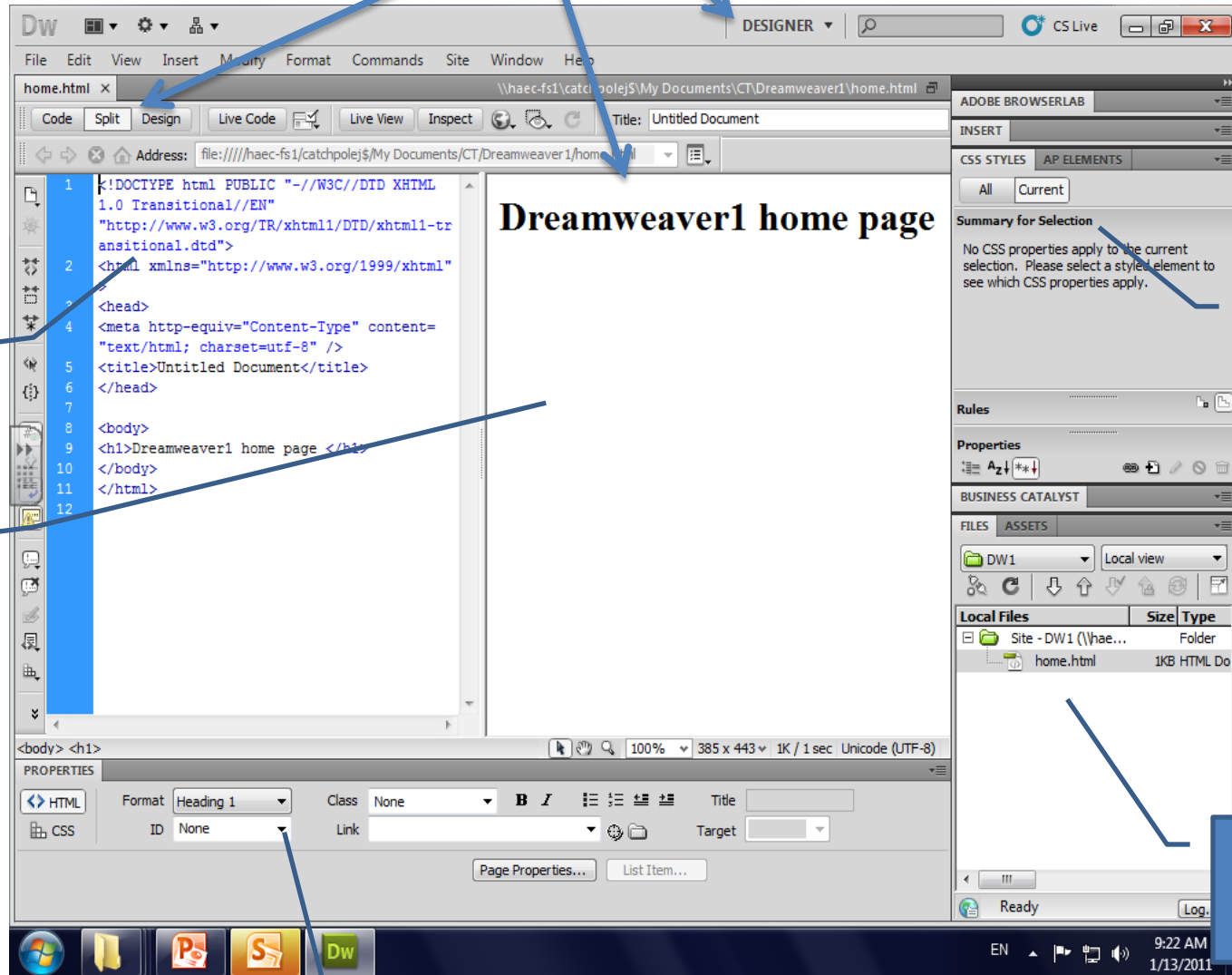
```
1 <!DOCTYPE html PUBLIC "-//W3C//DTD XHTML 1.0  
Transitional//EN"  
"http://www.w3.org/TR/xhtml1/DTD/xhtml1-transitional.d  
d">  
2 <html xmlns="http://www.w3.org/1999/xhtml">  
3 <head>  
4 <meta http-equiv="Content-Type" content="text/html;  
charset=utf-8" />  
5 <title>Untitled Document</title>  
6 </head>  
7  
8 <body>  
9 </body>  
10 </html>  
11
```

The right sidebar contains several panels: ADOBE BROWSERLAB, INSERT, CSS STYLES (with 'All' and 'Current' buttons), All Rules (showing '(no styles defined)'), Properties (with an 'Add Property' button), BUSINESS CATALYST, FILES (with 'xxx_portfolio' selected and 'Local view' selected), and ASSETS. The bottom status bar shows the current selection as '<body>', zoom level at 100%, and dimensions of 293 x 443. The bottom-left Properties panel shows HTML and CSS settings for the selected element.



The workspace

The workspace is divided into panels, click here or here or here to change the layout of the panels



Properties of currently selected object

Site management

Site management

Format menu

is where you can change the look of text and other objects.

Properties Panel

is where you can control the behaviour of the objects on your page.

Explore the interface

Spend a few minutes clicking around the interface and exploring it.

See if you can work out how to insert an image.

Next up we look at planning your folder structure.